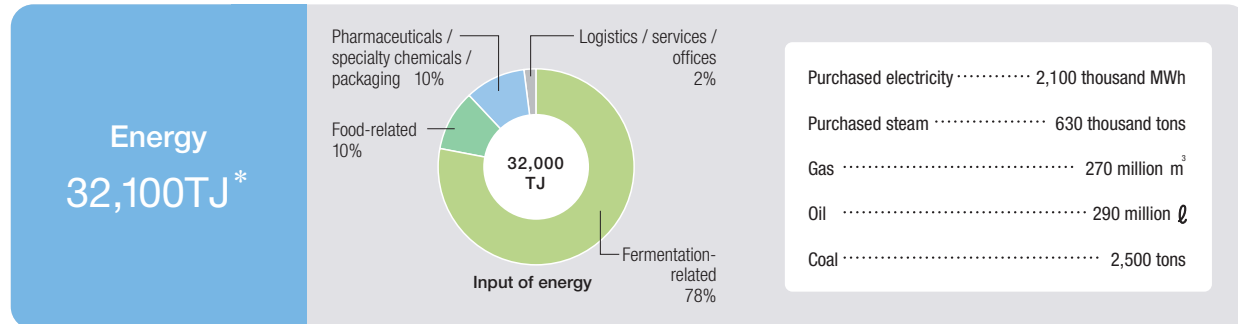
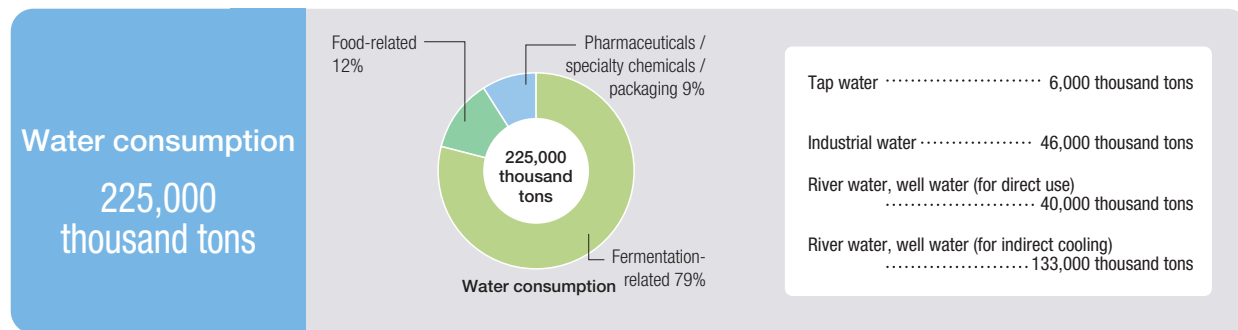
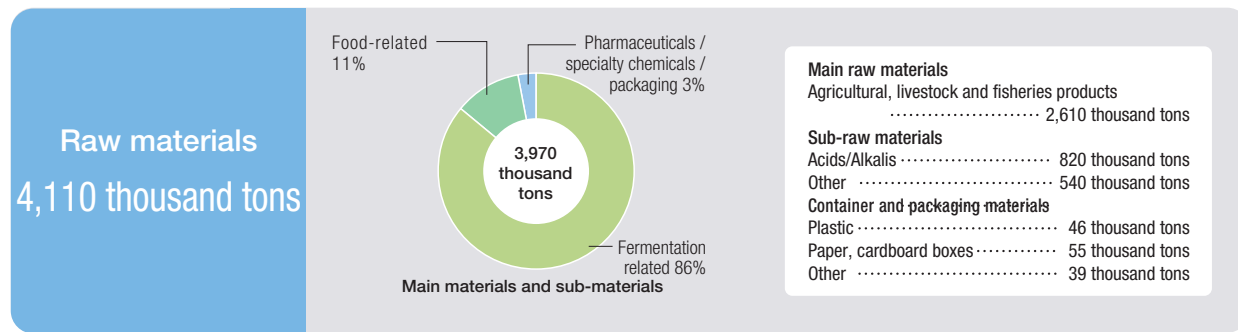


Input and Output

INPUT | Input of energy and resources



*TJ: Terajoule, T (tera) = 10¹²



Characteristics of environmental impact by business segment

● Fermentation-related business

Sales from the fermentation-related business account for about 27% of the Group's net sales. Nevertheless, this business exerts a larger environmental impact than other business segments, since the production of amino acids using the fermentation method consumes a significant amount of energy in the form of electricity and steam and great quantities of water.

Accordingly, the Ajinomoto Group is striving to achieve manufacturing process innovations that enable the consumption of fewer resources and less energy, and is making progress in the reduction of wastewater and the effective utilization of by-products.

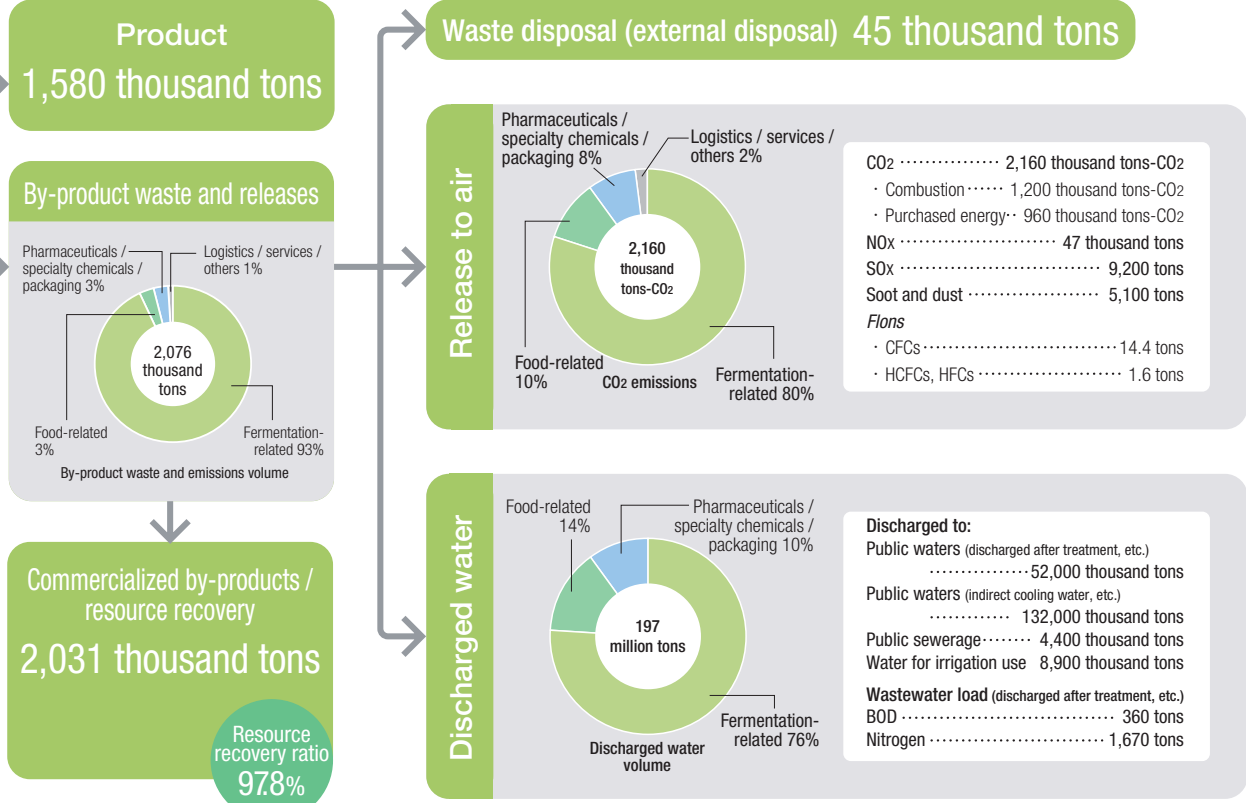
● Food-related business

To reduce environmental impact from our food-related business, we must work closely with consumers and distribution sectors to reduce waste products, improve containers and packaging materials, recover resources from these materials after their initial use, reduce and recover resources from food waste, and so forth. The Ajinomoto Group is therefore not only working to reduce the environmental impact generated by our production and sales activities, but also moving aggressively to form alliances with distribution sectors and conduct awareness campaigns for consumers. In this way, we are striving to reduce society's overall environmental impact and to help build a sustainable, recycling-oriented society.

Consumers
Business Partners
Shareholders and Investors
Local Communities
Employees
Global Environment

Compared to the fiscal 2004 report, the scope of aggregation of environmental performance data expanded by five operational sites in Japan and five sites outside Japan, due to M&A and business expansions that are now possible to include in the performance aggregation. Previous data have been re-aggregated to reflect as far as possible the expanded scope of aggregation.

OUTPUT | Substance releases and environmental impact



Input & output relating to the Food Recycling Law



Pharmaceuticals, specialty chemicals, and packaging materials

In this business segment, we are pursuing energy conservation and waste reduction, as well as the proper use of chemical substances during our R&D and production operations, as part of more stringent environmental management.

Logistics and services, and other businesses

In logistics operations including warehousing, we focus our efforts on safety and environmental measures, including the reduction of CO₂ from fuel consumption, the prevention of air pollution from exhaust gases, the proper disposal of waste products in compliance with laws and regulations, and countermeasures against environmental pollution associated with accidents.

Consolidated net sales*

*The Ajinomoto Group business segments categorized according to the characteristics of environmental impact generated by various manufacturing methods, excluding cooperative ventures, such as edible oils, coffee, and dairy products. These categories are different from the business segments based on consolidated financial accounting.

