



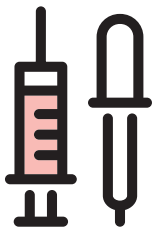
Evaluating  
Health and  
Nutritional  
Status

# AminoIndex<sup>®</sup>

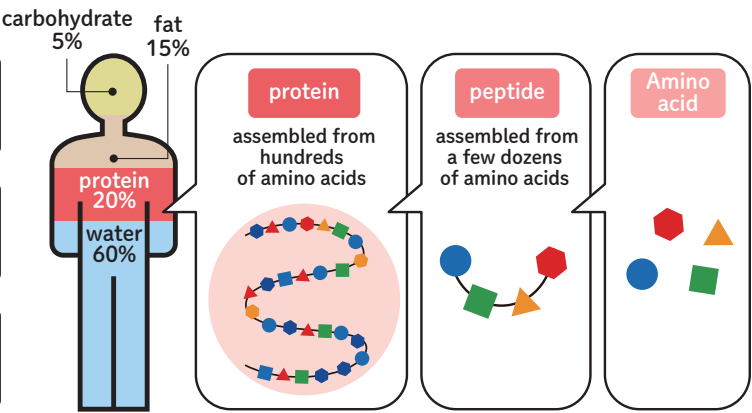
~Risk assessment  
of various diseases~

## Benefits

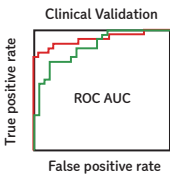
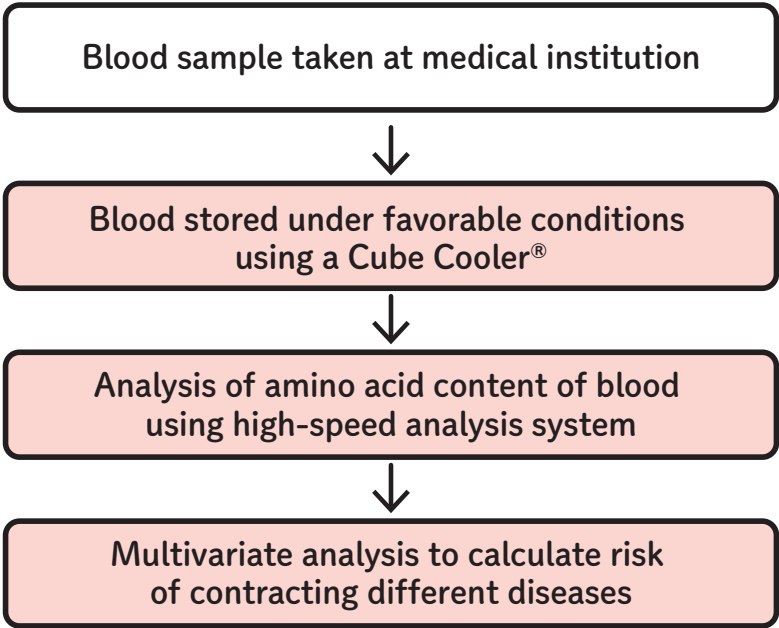
Nutritional status and the possibility  
of different diseases can be determined  
from the balance  
of amino acid concentrations in the blood.



- Risk of contracting cancer  
can be shown
- Amino acids that are deficient  
can be shown
- Risk of contracting diabetes  
can be shown



## Our Technology



$$\log \left( \frac{P}{1-P} \right) = \beta_0 + \beta_1 x_1 + \beta_2 x_2 + \dots + \beta_r x_r$$